

# Logging on to the Remote Access Network

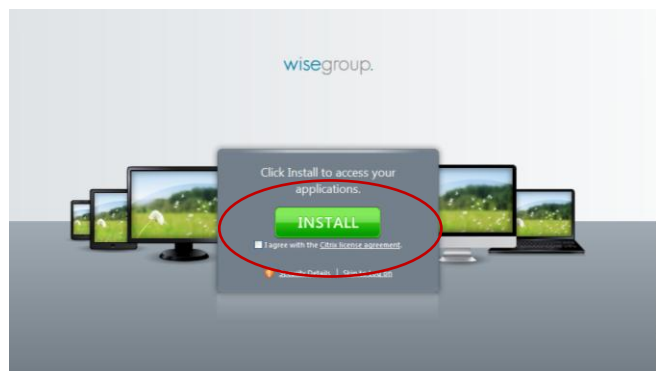


The first time you access the network, you will need to download a specific file. You will only need to download this file once.

The following instructions will help you through this process. Please be aware that your computers settings will determine how the information is presented to you. If you have any problems, please contact IS Support on 07 857 1226.

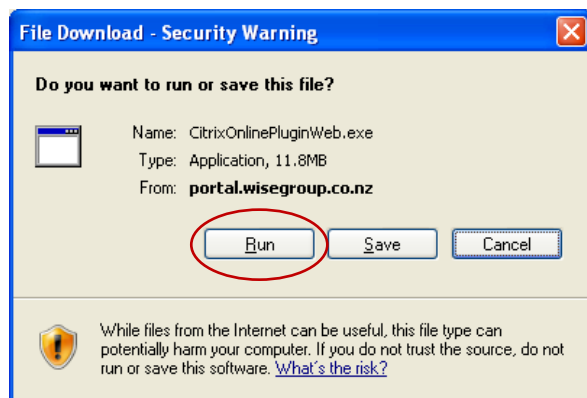
## Step 1

The first time you log on the remote access network you will see the following screen. **Tick the box** to agree with the Citrix license agreement then click **Install**.



## Step 2

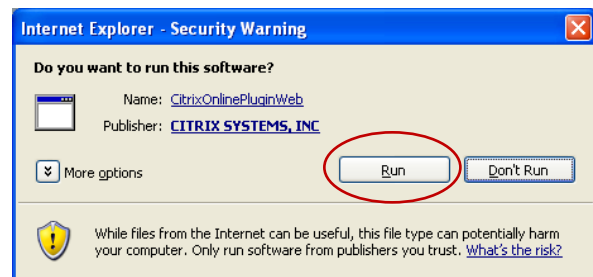
Click on **Run**.





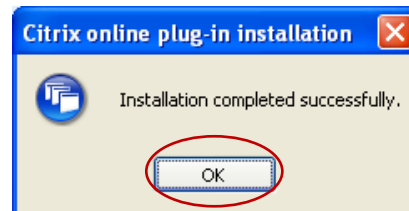
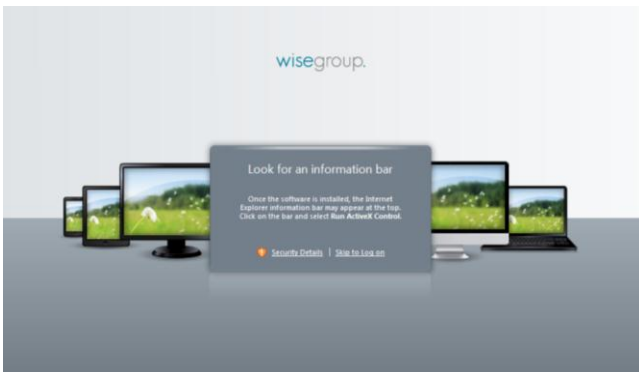
### Step 3

You may see the following message. If so, click **Run**.



### Step 4

During installation you will see the below screen. Once installation is complete, click OK.



### Step 5

You can now log in with your usual user name and password.



**Every journey brings new learnings**